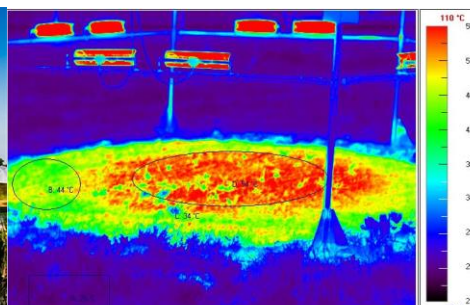


Pre AoM 4 Brussels 6 June 2018:

# BE National Node: presentation of the Belgian platforms

Directors/managers of the research platforms

Representatives from the ministries responsible for science policy  
(national and regional)





Pre AoM 4 Brussels 6 June 2018:



# BE National Node: presentation of the Belgian platforms

## 1. Roadmap vs. calls for ESFRI participation

## BE National Node: presentation of the Belgian platforms

1. Roadmap vs. calls for ESFRI participation

2. Flanders: call in 2011-2012 → consortium:

- ❑ Plants and Ecosystems (UAntwerp)
- ❑ Ecosystem Management (UAntwerp)
- ❑ Centre for Environmental Sciences (UHasselt)
- +
- ❑ 2014: Systemic Physiological and Ecotoxicological Research (UAntwerp)

## BE National Node: presentation of the Belgian platforms

1. Roadmap vs. calls for ESFRI participation

2. Flanders: call in 2011-2012 → consortium:

- ❑ Plants and Ecosystems (UAntwerp)
- ❑ Ecosystem Management (UAntwerp)
- ❑ Centre for Environmental Sciences (UHasselt)
- +
- ❑ 2014: Systemic Physiological and Ecotoxicological Research (UAntwerp)



plan to realize several large experimental facilities in the frame of AnaEE:

- new ones and upgrades
- terrestrial and aquatic
- enclosed and open-air

## BE National Node: presentation of the Belgian platforms

3. Flemish consortium selected for participation to AnaEE (ranked 3rd out of 8)
4. Funding decisions postponed

...



...

5. 2018: current status of AnaEE-Flanders?

# BE National Node: presentation of the Belgian platforms

## Current status of AnaEE-Flanders components:

### OPERATIONAL:

Macroscale Ecotron at UHasselt (12 large units) *terrestrial*

### FUNDED AND BEING BUILT:

Free-air Exposure System (12 units) at UAntwerp to simulate climate extremes → 2018  
*terrestrial*

Mesoscale Ecotron at UAntwerp (24 medium-sized units) → 2019-2020 *terrestrial*

Aquatic and Wetland Facility PART 1 at UAntwerp: River Flume → 2018 *aquatic*

# BE National Node: presentation of the Belgian platforms

## Current status of AnaEE-Flanders components:

### PLANNED COMPONENTS (PENDING FUNDING)

Mesoscale Ecotron at UAntwerp (additional units) *terrestrial*

Aquatic and Wetland Facility PART 2 at UAntwerp: Wetland Mesocosms *aquatic*

Aquatic and Wetland Facility PART 3 at UAntwerp: Lippenbroek *aquatic*  
(whole-ecosystem controlled flooding facility)

### ADDITIONAL COMPONENT: operational, AnaEE-compliance to be evaluated

Aquatic and Wetland Facility PART 4 at UAntwerp: Mesodrome *aquatic*

# BE National Node: presentation of the Belgian platforms

## Walloon region

**OFFICIALLY OPENED on 24 May 2018:**

Indoor Ecotron controlled environment facility at Gembloux *terrestrial, agronomy*  
(University of Liège)

Possible nearby open-air facilities, AnaEE-compliance to be evaluated



