

AnaEE

Infrastructure for Analysis and Experimentation on Ecosystems

Grant Agreement Number: 312690
SEVENTH FRAMEWORK PROGRAMME
CAPACITIES
RESEARCH INFRASTRUCTURES
COMBINATION OF CP & CSA

DELIVERABLE D2.1

Deliverable title: AnaEE vision

Abstract:

The services AnaEE will deliver to its various users have been defined. We elaborate on the added value that the distributed infrastructure AnaEE would bring compared to the current spread of platforms; we suggest tools to deliver services efficiently and with the highest added value. The survey results (Annex II and III) helped the elaboration of the AnaEE Strategic Vision. Beside setting the societal context of AnaEE, the experimental approach to be followed, the services to be provided, and the complementarity with other infrastructures, a scheme of AnaEE has been defined. A data base of >1000 AnaEE potential stakeholder has been installed and their characteristics and expectations will be analyzed through questionnaires. A first analysis related to the scientific users (117 responses received as of October 2013) of AnaEE has been performed. A detailed analysis of these responses is provided. The adjustment other workpackages workplan was provided through the participation of all workpackages to the workshops and writings of WP2, and in particular at the Venice meeting in October 2013.

Due date of deliverable: Month 12

Actual submission date: Month 15

Start date of the project: November 1st, 2012

Duration: 42 months

Organisation name of lead contractor: Fondazione Edmund Mach

Contributors: Francesco della Porta (Analysis), Jacques Roy (Vision), Francesco Fracaro (Survey and Data Processing)

Revision N°: Vfinal

Dissemination level:

PU Public (must be available on the website)	<input type="checkbox"/>
PP Restricted to other programme participants (including the Commission Services)	<input checked="" type="checkbox"/>
RE Restricted to a group specified by the consortium (including the Commission Services) (precise to whom it should be addressed)	<input type="checkbox"/>
CO Confidential, only for members of the consortium (including the Commission Services)	<input type="checkbox"/>

Revision N°	Date	Changes between different versions	Distribution (who have reviewed)
V1	2013/12/16		Francesco Fracaro
2	2014/01/13		Francesco della Porta

The authors would like to acknowledge and thank all the contributors to this Deliverable, in particular: Claus Beier, Jane Hawkins, Jean Clobert, Jean Francois Le Galliard. In addition, WP2, WP3, WP4, WP5 participants and all other members of the AnaEE Steering Committee.

INTRODUCTION TO ANAEE STAKEHOLDERS GENERAL OUTLINE

Stakeholders are the building blocks whereby AnaEE will accomplish its mission. In fact, according to the approved VISION:

AnaEE will support European scientists and policymakers to develop solutions to the challenges of food security and environmental sustainability, with the aim of stimulating the growth of a vibrant bioeconomy. AnaEE will accomplish this mission by building permanent and substantial links among researchers, science managers, policy makers, public and private sector innovators, and citizens.

Stakeholders will access to services provided by AnaEE distributed infrastructure in three prevailing modes:

By funding experiments run by researchers (users of the AnaEE infrastructure external or internal to the AnaEE Consortium). Those projects will be performed by the AnaEE distributed infrastructure, and will deliver custom results to the funder (custom services)

By accessing data, predictive models, surveys, courses, or other information routinely generated by AnaEE infrastructure (direct services)

By acquiring Technology, Intellectual Property, specific Training, or other indirect output of the AnaEE activity (technology transfer)

However, the relationship goes both ways: AnaEE seeks Stakeholders' advice and input in order to fulfill its mission. Primary examples are some of the societal challenges defined by the European Council, which form the core of AnaEE vision: food security, environmental sustainability, and a competitive bio-economy.

According to the results of the online survey distributed throughout summer 2013, the Societal Grand Challenges that capture Researchers interest are for the most are in order: "Adaptation to Climate Change", "Climate Change & Extreme Events" and "Soil Sustainability".

In particular, according to this survey, the most crucial societal challenges are Adaptation to Climate Change, Climate Change and Extreme Events and Soil Sustainability.

Five classes of stakeholders (or 'users') were identified: (i) Scientists, (ii) Education, (iii) Government decision makers, (iv) Business, and (v) Society at large (NGO and citizens). Each class has been or will be approached with a customized online questionnaire, and a database organized around a CRM software (Customer Relationship Management).

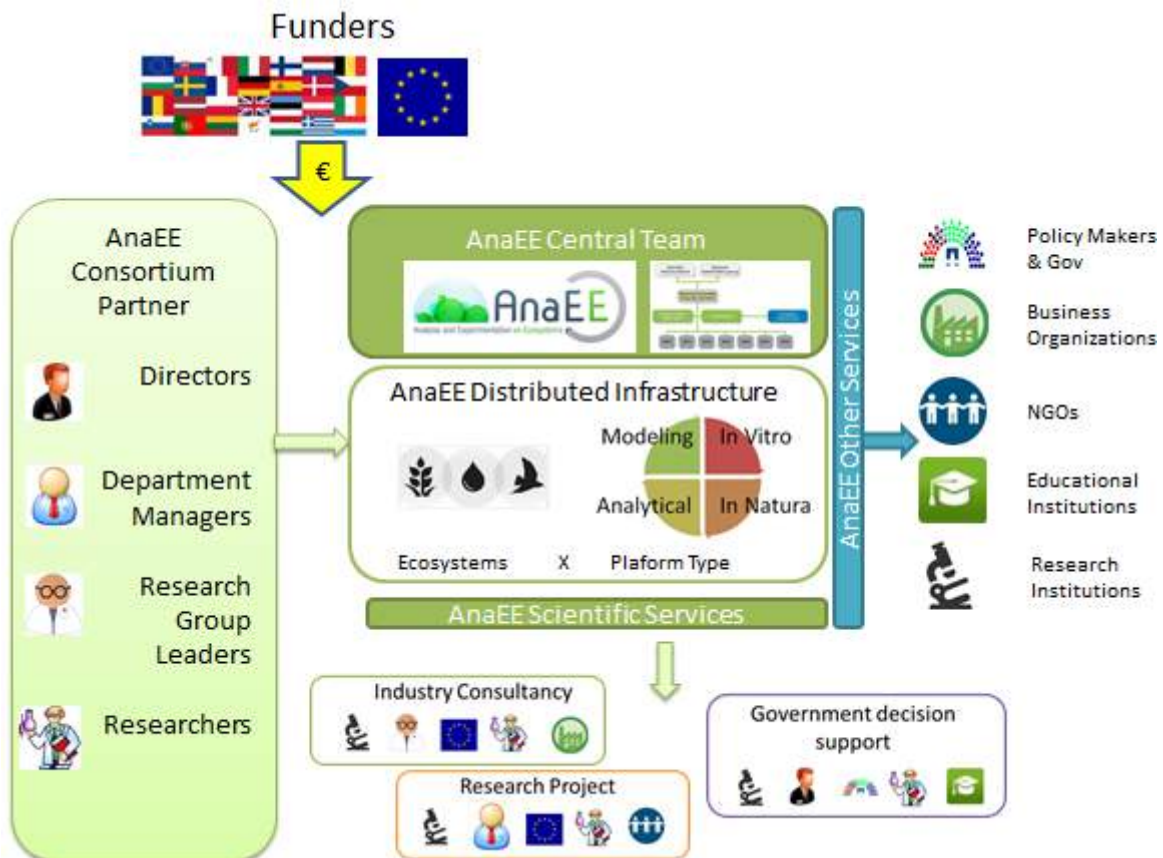


Figure 1 - AnaEE Stakeholders Map

Specific aspects of the relationship with Stakeholders, not discussed at this stage, include Funding of experiments (which is primarily investigated by Work Package 7), users Access to experimental facilities (WP4), provision of services (WP2), Intellectual Property Rights (WP5) and Availability of data and metadata (WP4, WP5). All will be treated in different WPs, and all require policies and procedures, as well as a permanent organization.